

Rad^{to}Rad Learning

Focused tips from our experts

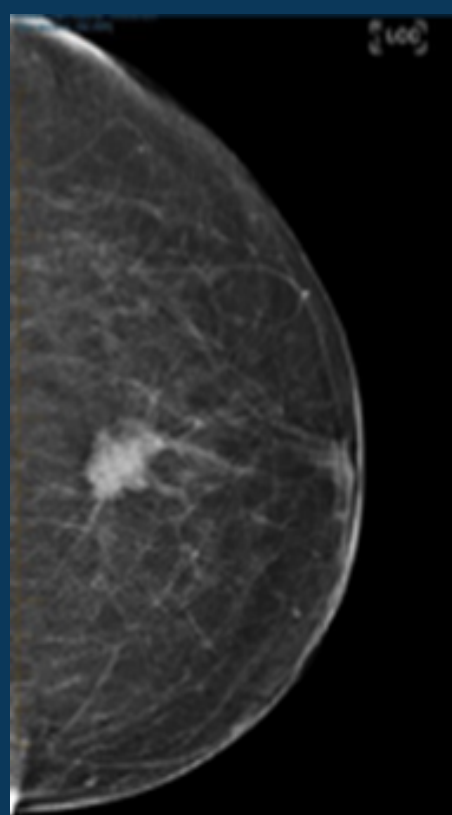
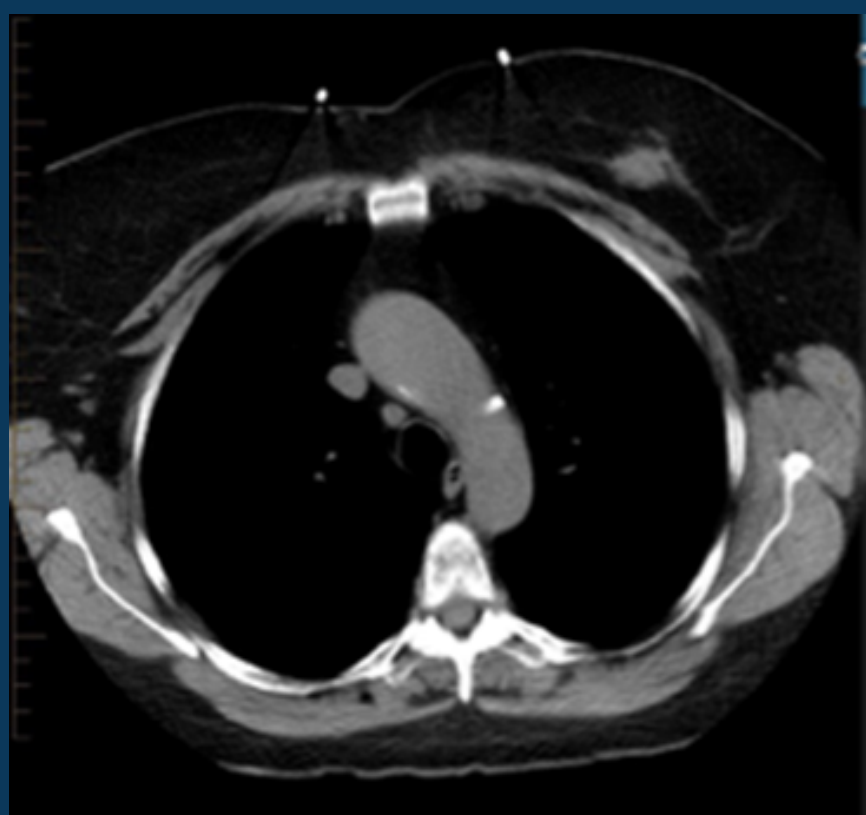
Incidental Breast Cancer on Chest CT

BREAST IMAGING NATIONAL SUBSPECIALTY DIVISION



PEER LEARNING OPPORTUNITY

During a Chest CT primary focus is on evaluating other anatomy, one may overlook breast tissue.



Remember to review breast tissue in the search pattern.



PRACTICAL INSIGHTS

- Not all eligible women undergo mammographic screening.
- Early detection saves lives.
- Remember to review breast tissue in FOV.



CHEST CTs INCLUDE BREASTS

CLINICAL VALUE