

Rad^{to}RadLearning

Focused tips from our experts

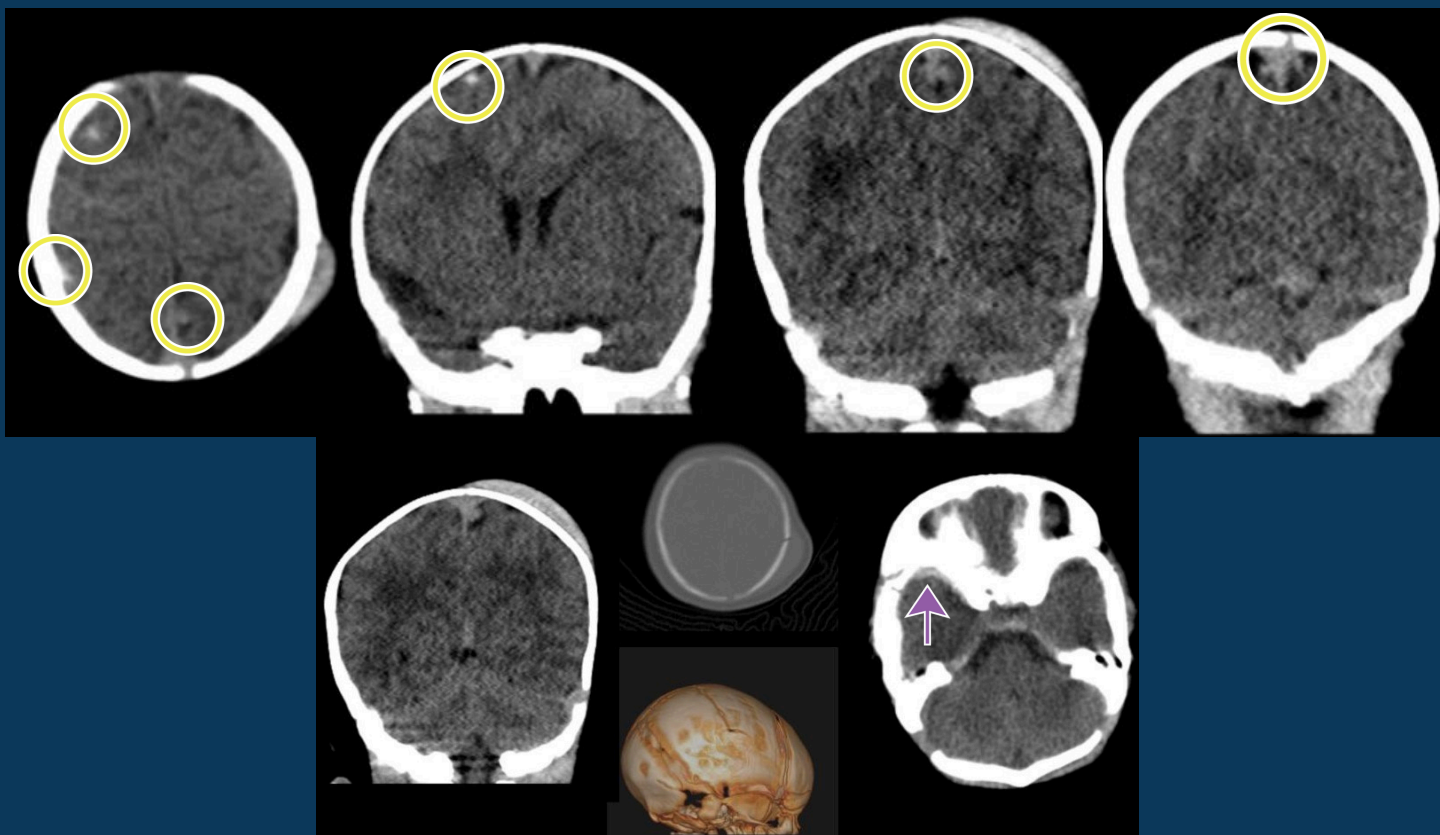
Abusive Head Injury

PEDIATRIC RADIOLOGY NATIONAL SUBSPECIALTY DIVISION



PEER LEARNING OPPORTUNITY

Abusive head trauma is a leading cause of abuse deaths in children under 5. At least 1 in 7 U.S. children experience abuse or neglect, and many cases are unreported.



Skull fracture with overlying scalp hematoma; numerous small extra-axial hemorrhages; larger right temporal SDH.



PRACTICAL INSIGHTS

- Assess for:
 - smaller SDH
 - small areas of surface hemorrhage
 - parasagittal cortical (bridging) vein thrombus
- Obtain 3D images if possible to help with skull fracture detection
- [Click here for additional information.](#)



CHECK CORONAL IMAGES AND PARAMEDIAN AREAS

CLINICAL VALUE